

3/4 Days Krabi Leisure (2-To-Go)

Validity from : 01 November 2017 - 31 October 2018

Inclusions: Accommodation with ABF, Return airport transfer (S-I-C) & H/D City Tour (S-I-C)

Black out : For all passenger check in period 15-20 February 2018 GM Holidays Surcharge SGD 24 / SGD 15 for Adult / Child per person per stay will be applied

Hotels	Room Type	Validity	3Days F&E Price per person					4Days F&E Price per person					Extension night with ABF (Nett per room per night)			
			Single	Twin	Triple	Child ExBed	CNB	Single	Twin	Triple	Child ExBed	CNB	Single	Twin	Triple	ABF CNB
Ao Nang Mountain View ****	Deluxe	01 Nov'17 - 19 Dec'17	254	171	171	171	107	337	218	218	218	124	92	92	129	18
		20 Dec'17 - 10 Jan'18	336	212	212	199	107	460	279	279	259	124	133	133	170	18
		11 Jan'18 - 20 Apr'18	263	176	176	176	107	350	225	225	222	124	97	97	133	18
		21 Apr'18 - 31 Oct'18	209	149	149	149	107	269	184	184	181	124	70	70	92	18
Remark - Minimum 3 Consecutive nights stay during 20 Dec'17-10 Jan'18																
Aonang Cliff Beach ****	Superior	01 Nov'17 - 20 Dec'17	418	253	253	233	125	582	340	340	309	151	174	174	220	27
		21 Dec'17 - 10 Jan'18	527	308	308	269	125	746	422	422	363	151	229	229	274	27
		11 Jan'18 - 20 Mar'18	463	276	276	249	125	650	375	375	331	151	197	197	242	27
		21 Mar'18 - 15 Apr'18	418	253	253	233	125	582	340	340	309	151	174	174	220	27
		16 Apr'18 - 31 Oct'18	272	185	185	185	125	364	236	236	236	151	101	101	147	27
Remark - Minimum 3 Consecutive nights stay during 29 Dec'17-10 Jan'18 -Compulsory Gala Dinner on 31 Dec'17 Adult SGD 169/pax Child SGD 87/pax																
Cha-Da Beach Resort ****	Silver Suite	01 Nov'17 - 23 Dec'17	359	224	224	212	116	494	296	296	279	138	145	145	190	23
		24 Dec'17 - 07 Jan'18	613	351	351	297	116	875	487	487	406	138	272	272	317	23
		08 Jan'18 - 28 Feb'18	468	278	278	249	116	657	378	378	334	138	199	199	245	23
		01 Mar'18 - 31 Mar'18	381	235	235	221	116	528	313	313	290	138	156	156	201	23
		01 Apr'18 - 31 Oct'18	281	187	187	187	116	378	240	240	240	138	106	106	151	23
Remark - Minimum 4 Consecutive nights stay during 24 Dec'17- 03 Jan'18 - Compulsory Christmas Eve Dinner on 24 Dec'17 Adult SGD 137/pax Child SGD 74/pax -Compulsory Gala Dinner on 31 Dec'17 Adult SGD 192/pax Child SGD 101/pax																
Centara Anda Dhevi Resort Spa ****	Deluxe	01 Nov'17 - 24 Dec'17	445	276	276	242	121	623	375	375	324	142	188	197	238	25
		25 Dec'17 - 06 Jan'18	609	358	358	297	121	869	497	497	406	142	270	279	317	25
		07 Jan'18 - 28 Feb'18	481	294	294	255	121	678	402	402	343	142	206	215	254	25
		01 Mar'18 - 10 Apr'18	445	276	276	242	121	623	375	375	324	142	188	197	238	25
Remark - Minimum 4 Consecutive nights stay during 24 Dec'17- 03 Jan'18 - Non Compulsory Christmas Eve Dinner on 24 Dec'17 Adult SGD 69/pax Child SGD 40/pax -Compulsory Gala Dinner on 31 Dec'17 Adult SGD 192/pax Child SGD 72/pax																
Krabi Cha-Da Beach Resort ****	Deluxe Garden View	01 Nov'17 - 23 Dec'17	281	187	187	187	112	378	240	240	240	131	106	106	151	21
		24 Dec'17 - 07 Jan'18	418	253	253	233	112	582	340	340	309	131	174	174	220	21
		08 Jan'18 - 28 Feb'18	318	203	203	199	112	432	265	265	259	131	124	124	170	21
		01 Mar'18 - 31 Mar'18	281	187	187	187	112	378	240	240	240	131	106	106	151	21
		01 Apr'18 - 31 Oct'18	213	151	165	165	112	275	206	206	206	131	74	74	120	21
Remark - Minimum 4 Consecutive nights stay during 24 Dec'17- 03 Jan'18 - Compulsory Christmas Eve Dinner on 24 Dec'17 Adult SGD 82/pax Child SGD 46/pax -Compulsory Gala Dinner on 31 Dec'17 Adult SGD 124/pax Child SGD 67/pax																
		01 Nov'17 - 20 Dec'17	281	187	187	180	105	378	240	240	231	122	106	106	142	18

Krabi Front Bay Resort ****	Deluxe	21 Dec'17 - 10 Jan'18	318	203	203	194	105	432	265	265	250	122	124	124	160	18
		11 Jan'18 - 30 Apr'18	281	187	187	180	105	378	240	240	231	122	106	106	142	18
		01 May'18 - 31 Oct'18	254	171	171	171	105	337	218	218	218	122	92	92	129	18
		Remark - Minimum 2 Consecutive nights stay during 29 Dec'17-02 Jan'18														
Maritime Park & Spa Resort ****	Deluxe	01 Nov'17 - 24 Dec'17	363	226	226	208	112	500	300	300	272	131	147	147	201	21
		25 Dec'17 - 05 Jan'18	454	271	271	240	112	637	368	368	318	131	192	192	247	21
		06 Jan'18 - 31 Mar'18	363	226	226	208	112	500	300	300	272	131	147	147	201	21
		01 Apr'18 - 31 Oct'18	290	190	190	178	112	391	245	245	227	131	110	110	147	21
Remark - Minimum 3 Consecutive nights stay during 25 Dec'17-05 Jan'18																
Pakasai Resort ****	Chalet	01 Nov'17 - 24 Dec'17	536	312	280	280	112	760	429	377	377	131	233	233	288	21
		25 Dec'17 - 05 Jan'18	645	367	317	317	112	923	511	431	431	131	288	288	342	21
		06 Jan'18 - 31 Mar'18	536	312	280	280	112	760	429	377	377	131	233	233	288	21
		01 Apr'18 - 31 Oct'18	409	249	226	226	112	569	334	295	295	131	170	170	206	21
Remark - Minimum 3 Consecutive nights stay during 25 Dec'17-05 Jan'18																
Holiday Inn Resort ****	Garden View	01 Nov'17 - 23 Dec'17	504	296	296	267	112	712	405	361	361	131	217	217	272	21
		24 Dec'17 - 10 Jan'18	781	435	435	362	112	1128	613	500	500	131	356	356	410	21
		11 Jan'18 - 15 Apr'18	609	349	303	303	112	869	484	413	413	131	270	270	324	21
		16 Apr'18 - 31 Oct'18	390	240	240	230	112	541	320	304	304	131	160	160	215	21
Remark - Minimum 5 Consecutive nights stay during 24 Dec'17-10 Jan'18 Remark - Surcharge on 24 Dec'17 - 10 Jan'18 SGD 51/room/night. Check out on 30,31 Dec'17 is not allowed. -Compulsory Gala Dinner on 31 Dec'17 Adult SGD 233/pax Child SGD 119/pax Chinese New Year Surcharge on 15-18 Feb'18 SGD 28/room/night																
Deevana Plaza Krabi, Aonang ****	Deluxe	01 Nov'17 - 24 Dec'17	427	258	258	258	116	596	347	347	347	135	170	179	224	23
		25 Dec'17 - 05 Jan'18	600	344	344	344	116	841	472	472	472	135	256	260	306	23
		06 Jan'18 - 31 Mar'18	436	271	271	271	116	610	354	354	354	135	183	183	238	23
		01 Apr'18 - 31 Oct'18	318	203	208	208	116	432	268	268	268	135	124	124	179	23

Package Inclusions :

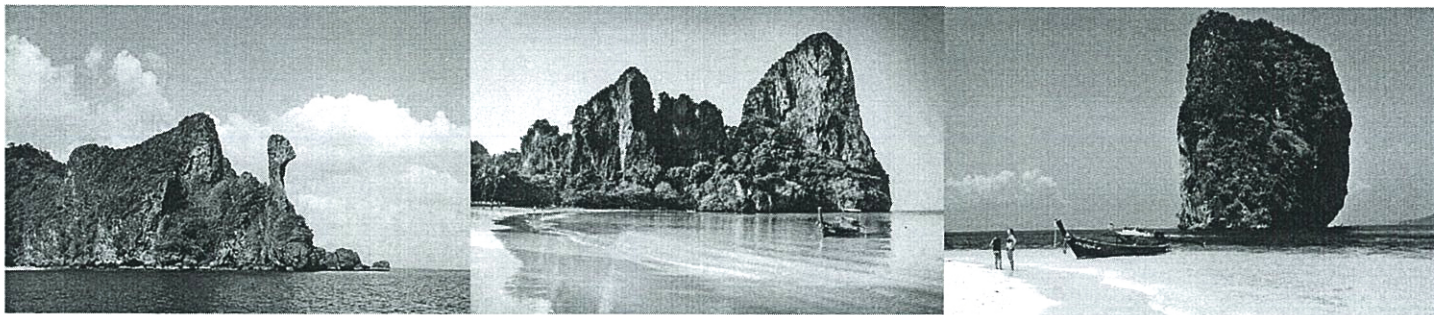
1. Accommodation with ABF at Hotel
2. Free roundtrip Airport – Hotel transfer based on S.I.C.
3. Free **Krabi Half Day City Tour** based on S.I.C.

*** No Compulsory Tipping***

Term & Conditions :

1. Applicable to all Singapore Market only
2. Minimum stay 2 consecutive nights
3. Package excluded travel insurance
4. Child aged between 3 - 12 Yrs old
5. Maximum 1 CNB in 1 Room for hotels that allowed child staying with parent
6. Midnight surcharge SGD 20 / Person for booking arrival & departure
7. Single traveler surcharge SGD 35/Person (you will pay when you travel alone)
8. Load in Luggage policy : 1 pcs.of Luggage per 1 passenger, extra luggage
9. City tour & Airport transfer can't refund to cash

FREE KRABI ISLAND TOUR



Itinerary of Program " 4 Islands By Speed Boat "

08:00 Pick up from Krabi Town and Klong Muang 08:30 Pick up from Ao Nang for speed boat 09:00 Depart from pier by speed boat

- Phranang Cave – a very famous cave, location of a princess spirit hous' respected and worshiped by the local people*
- Chicken Island – it look like a chichken. Popular location for excellent snorkeling the marine life here will amaze you.*

Lunch at restaurant for speed boat.

- Tup Island – one of Thailand's unseen highlights,Tup Island is situated along Koh Dam Khwan. As the tide recedes, the sea is gradually separated by the white sand and limestone beach that will appear to amazingly connect the two islands at low tide.*
- Poda Island – lovely white, sandy beach, ideal for sunbathing, swimming and snorkeling. Enjoy great underwater adventures, exploring colorful corals and reef sh. (lunch (package) for longtail Boat)*

15:00 Return to Ao Nang

All Package Include:

- Hotel Transfer*
- National Park Fee*
- Accident Insurance*
- English Speaking Guide*
- Mask, Snorkel and Life jacket*
- Lunch – Buffet Lunch for 4 islands*
- Fruits & Drinking water*
- Soft Drink for Phi Phi Island*

Remark :

Tour itinerary might be change subject to traffic or weather conditions.

City tour will no refund to cash or changed to other tour.

[Click here to Submit Enquiry](#)

(GM-231117)